

**Kodak** EMS  
Business Software



# Maximizing Your Success

**K**odak EMS Business

Software is an extensive and flexible management information system (MIS) solution that combines the strength of a leading manufacturing-oriented ERP solution with Kodak's sophisticated print-focused capabilities.

EMS Software is designed for traditional and digital printing businesses with more than 75 employees, or revenues greater than US\$ 15 million. Including both software and professional services, EMS Software is a catalyst for business optimization that will help you face the future and succeed today.

## A Complete Solution

### Customer Relationship Management

Control all aspects of your company's interaction with customers and potential customers, including lead generation, business development, ordering, producing and shipping goods, receiving payment, and more.

### Sales Order Management

Streamline your sales process. By centralizing access to product, pricing, and customer information, orders can be generated with a minimal number of steps.

### Customer Service Management

Obtain a 360-degree view of your customers. This speeds diagnosis of customer inquiries and helps ensure optimal, timely resolution.

### Product Data Management

Create a central knowledge repository for process and product history. Promote integration, data exchange, tight control, and communication.

### Estimating and Planning

Take advantage of flexible, robust estimating, planning and scheduling solutions that help with both day-to-day production and long-range planning and decision making.

### Production Management

Model your best production practices using sophisticated technologies. Empower your shop floor personnel to make the decisions that will optimize your production process.

### Supply Chain Management

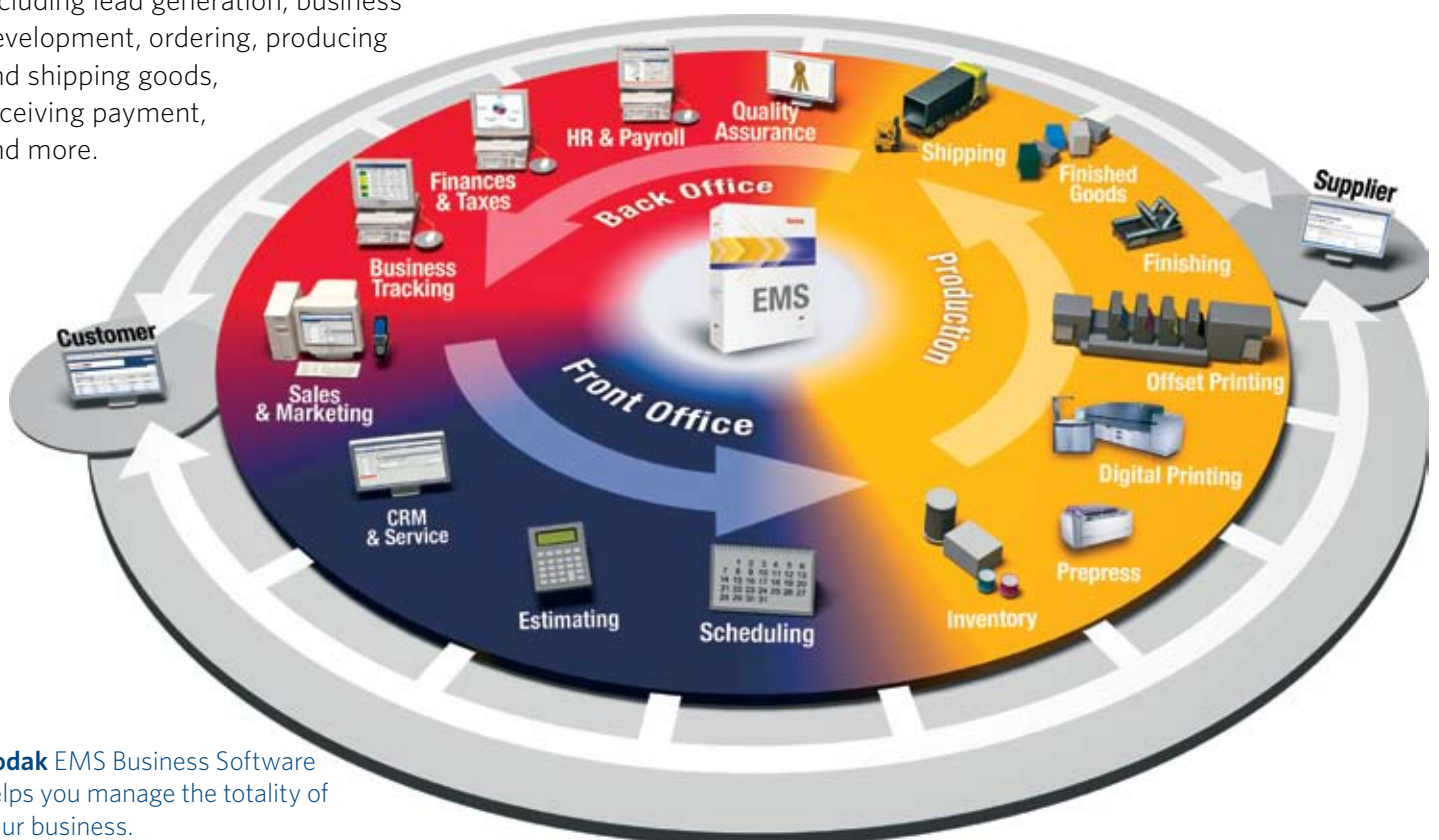
Achieve supply chain visibility and remove processes that do not add value. Meet customer demands for faster delivery and lower costs by synchronizing processes inside and outside your company.

### Financial Management

Access the tools you need to monitor financial conditions and improve your decision making.

### eBusiness

Create a global enterprise solution that keeps you connected with your entire network of trading partners 24 hours a day, 365 days a year.



**Kodak** EMS Business Software helps you manage the totality of your business.

## Business Performance Management

Manage your business with tools for reporting and analysis. Perform real-time monitoring and receive alerts when a KPI or process is outside a pre-established tolerance.

## Lean Manufacturing

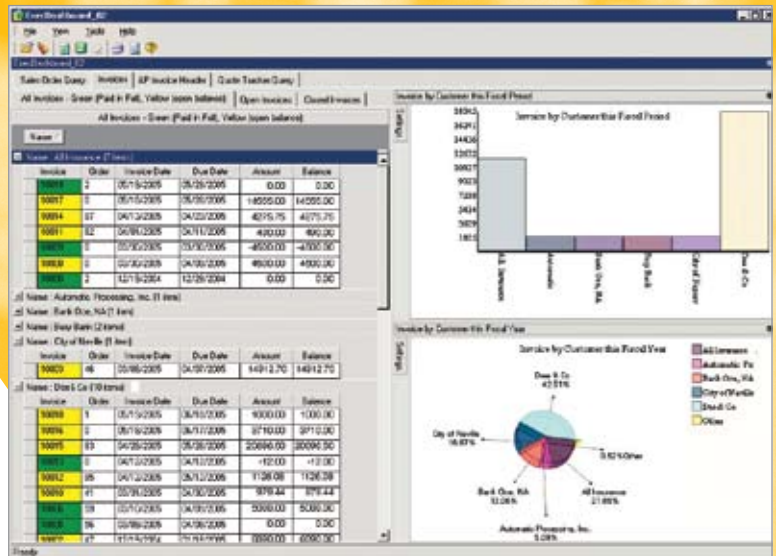
Enable lean thinking and practice throughout your organization. Work in real-time to optimize supply and demand throughout your entire enterprise, facility, department, or team by utilizing lean-supporting core methodologies, kanban flow (workorder-less manufacturing), automated material flow, poka-yoke (mistakeproofing) and more.

## Uniquely Suited to Your Business

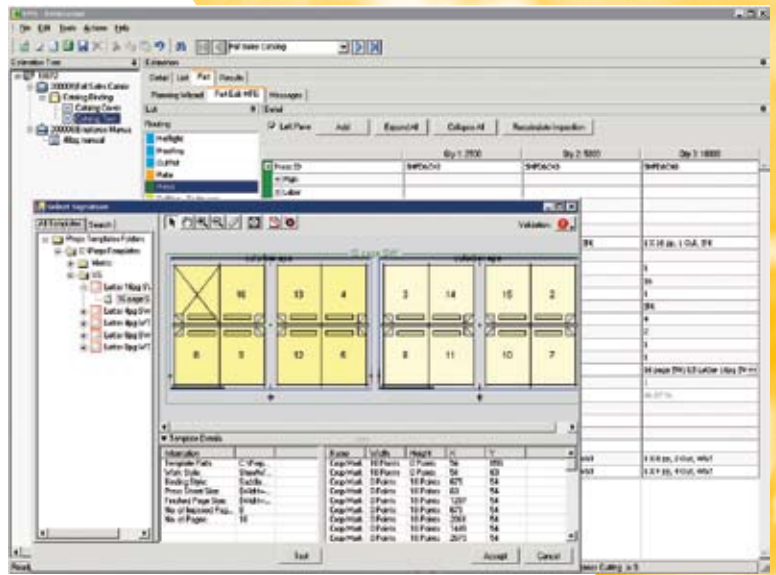
**Kodak EMS Software** is a feature-packed, modular solution supported by Kodak consulting and services. After selecting the EMS core configuration and a variety of software and hardware options, you can use Kodak's integration, business optimization, and training services to build and implement a solution suited to your unique business requirements.

## Part of Kodak Unified Workflow Solutions

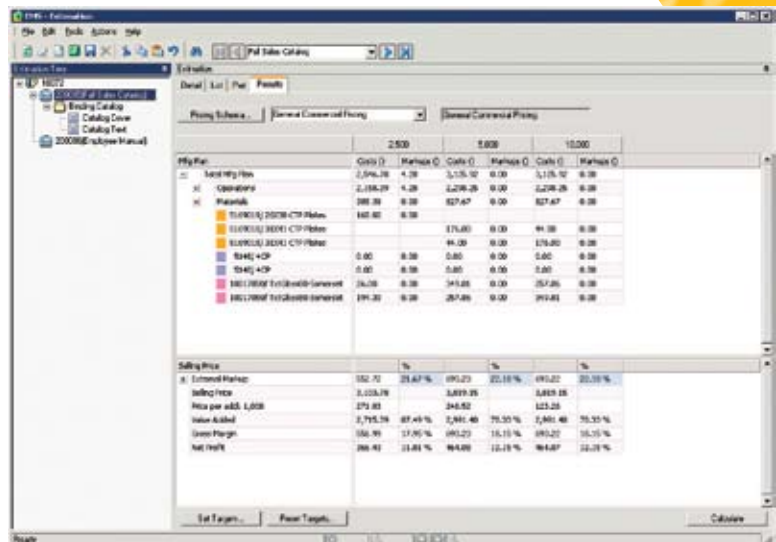
**Kodak EMS Software** is part of **Kodak Unified Workflow Solutions**, our integrated, end-to-end solution for printing using digital technologies. **Kodak Unified Workflow Solutions** seamlessly blend and manage a mixed production environment by integrating the four critical components of a print operation—business workflow systems, production workflow systems, color workflow systems, and data workflow systems—to profitably address production requirements and to serve as a basis for sales growth.



Sales people can configure their workspace to show the information that is most relevant to their job.



**Kodak EMS Software** offers integration with **Kodak Preps Software** and **Kodak UpFront Software**.



Based on targets and pricing schema that you define, EMS Software automatically calculates the selling price.

## Kodak EMS Software Configuration Components

Core Configuration	Inventory Management; Job Management; Order Management; Purchasing Management; Shipping & Receiving; Estimating & Production Planning; Job Configurator; Core Financial modules - A/R, A/P, GL; Bi-directional JDF Integration; Integration to <b>Kodak Prinergy</b> Business Link Software; Integration to <b>Kodak UpFront</b> Software; Integration to <b>Kodak Preps</b> Software
CRM & Sales Force Automation (Optional)	Customer Relationship Management (CRM); customerConnect Web Portal; Sales Force mobileConnect Web Portal; EDI
Supplier & Shipping Management (Optional)	Supplier Relationship Management (SRM); supplierConnect Web Portal; Advanced Shipping Management
Material & Plant Management (Optional)	Shop Floor Information System; Quality Control & Management; Advanced Material Management; Material Requirements Planning (MRP); Advanced Planning & Scheduling Master; Advanced Planning & Scheduling Viewer
Financial Management (Optional)	Multi-Company Management; Currency Management; Payroll Management; Adv Financial Reporting ( <b>Microsoft FRx</b> ) Report Writer/Viewer; Adv Financial Reporting ( <b>Microsoft FRx</b> ) Addt'l Viewer; Advanced Business Intelligence ( <b>CorVu</b> )
General (Optional)	Multi-plant and Multi-company Support; Currency Management; Payroll Management; Human Resource Management; Asset Management
Hardware (Optional)	<b>Dell PowerEdge</b> 2900 high-performance server with dual hyperthreaded Intel <b>Xeon</b> processors, SCSI u320 drives, and DDR2 memory; 4GB hard disk; 3-year limited warranty from Dell; Includes <b>Microsoft Windows</b> Server 2003 operating system

## Kodak EMS Software Minimum Requirements

Hardware (server)	<ul style="list-style-type: none"> <li>▪ Dual Xeon 2.4 GHz processor</li> <li>▪ 4 x 73 GB hot-swap data drive (or 2 x RAID 1)</li> <li>▪ 4GB memory</li> <li>▪ 1000BaseT network interface card</li> <li>▪ Redundant autosense power supplies</li> <li>▪ 1 x DVD drive</li> <li>▪ SVGA or higher adapter w/ color SVGA monitor. 1024 X 768 monitor resolution</li> <li>▪ Mouse + keyboard</li> </ul>
Software (server)	<b>Windows</b> Server 2003 operating system



### To learn more about solutions from Kodak:

Visit [graphics.kodak.com](http://graphics.kodak.com)

Produced using **Kodak** technology.

Eastman Kodak Company  
343 State Street  
Rochester, NY 14650 USA

© Kodak, 2007. Portions copyrighted by Epicor Software Corporation. All rights reserved. Kodak, UpFront and Preps are trademarks of Kodak. Other company and brand, product and service names are for identification purposes only and may be trademarks or registered trademarks of their respective holders.

Subject to technical change without notice.

E.ES.104.1107.en.07